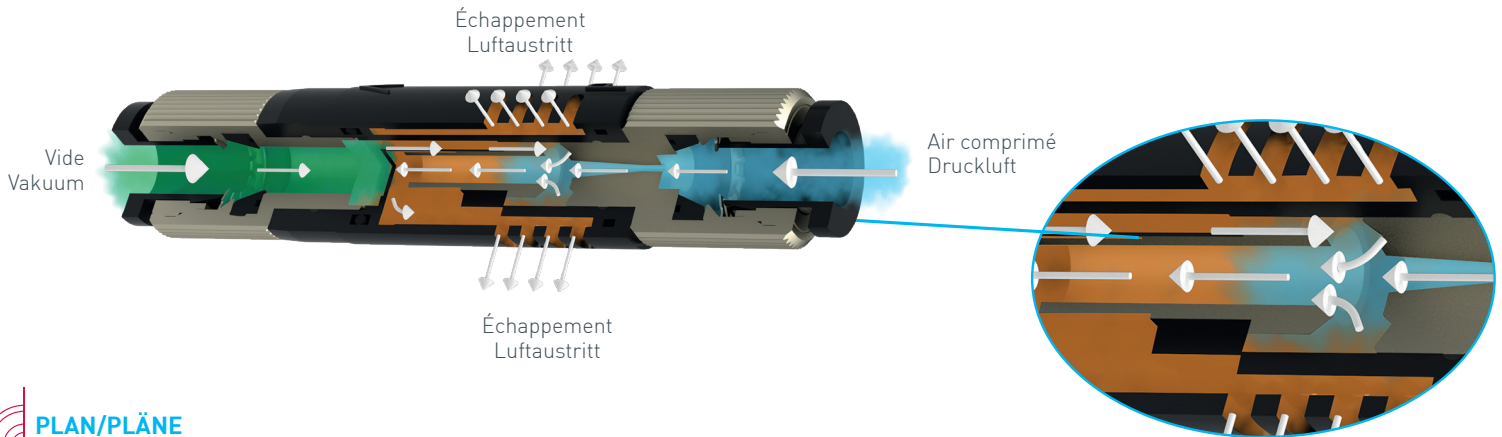
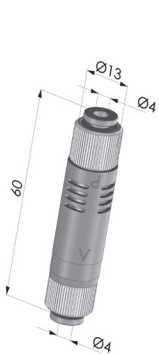


MODE D'EMPLOI  
GEBRAUCHSANWEISUNG

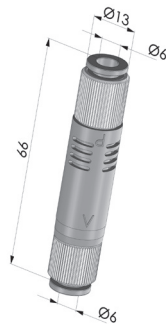
SCHEMA DE PRINCIPE/SCHEMATISCHE DARSTELLUNG



PLAN/PLÄNE



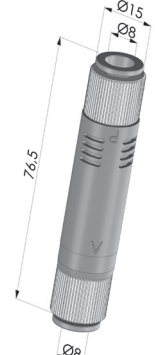
VML 05 04



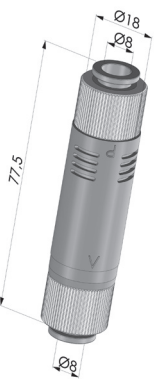
VML 05 06



VML 10 06



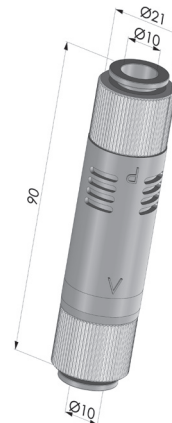
VML 10 08



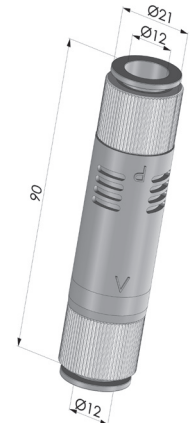
VML 15 08



VML 15 10



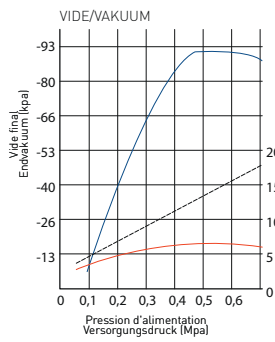
VML 20 10



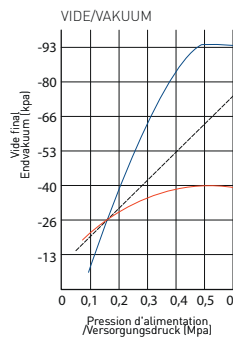
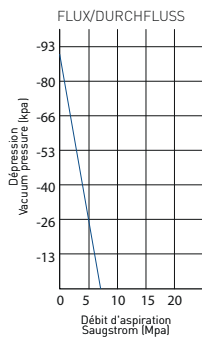
VML 20 12

INFORMATIONS TECHNIQUES/TECHNISCHE INFORMATIONEN

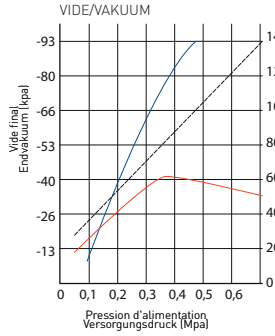
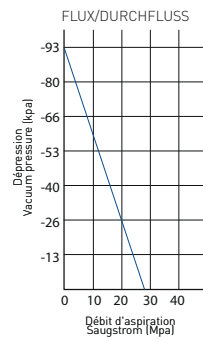
Référence/ Artikelnr.	Ø Tube/ Ø Schlauch (mm)	Ø Buse/ Düse (mm)	Air aspiré/Angesaugte Luft à/bei 5 bar			Vide/ Vakuüm (%)	Air consommé/ Luftverbrauch (NI/min)	Pression d'air/ Luftdruck (bar)	Masse/ Gewicht (g)
			(NI/mn)	(l/s)	(m³/h)				
VML 05 04	4	0,5	11,5	0,20	0,69	91	14	5	23
VML 05 06	6	0,5	11,5	0,20	0,69	91	14	5	23
VML 10 06	6	1	45	0,75	2,70	91	51	5	38
VML 10 08	8	1	45	0,75	2,70	91	51	5	33
VML 15 08	8	1,5	67,5	1,13	4	91	100	5	56
VML 15 10	10	1,5	67,5	1,13	4	91	100	5	41
VML 20 10	10	2	90	1,5	5	91	180	5	95
VML 20 12	12	2	90	1,5	5	91	180	5	67



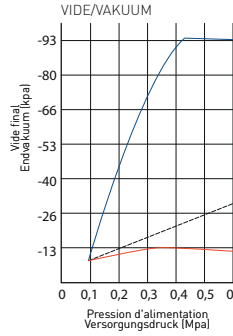
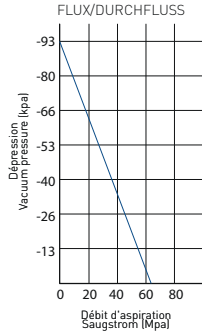
VML 05 04/VMT 05 06



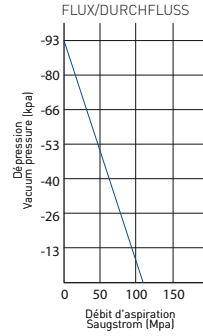
VML 15 08/VMT 15 10



VML 10 06/VMT 10 08



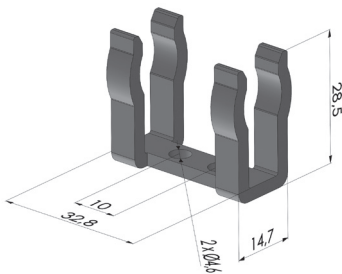
VML 20 10/VMT 20 12



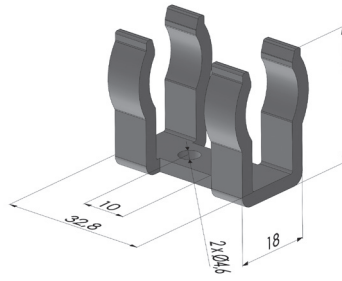
— Valeur de vide finale/Endwert des Vakuums  
 — Valeur de débit d'aspiration/Saugströmung Wert  
 - - - Consommation d'air/Luftverbrauch

OPTIONS/OPTIONEN

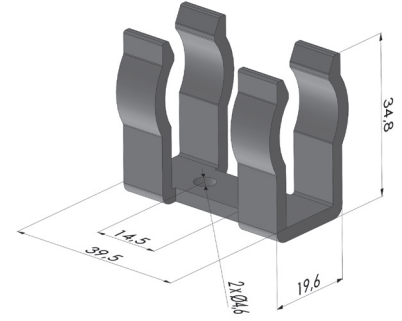
Référence/Artikelnr.	Masse/Gewicht (g)	Compatibilité/Kompatibilität
VM-C01	3	VML 05 04 / VML 05 06
VM-C02	4	VML 10 06 / VML 10 08
VM-C03	6	VML 15 08 / VML 15 10 / VML 20 10 / VML 20 12



VM-C01 ■ Nylon

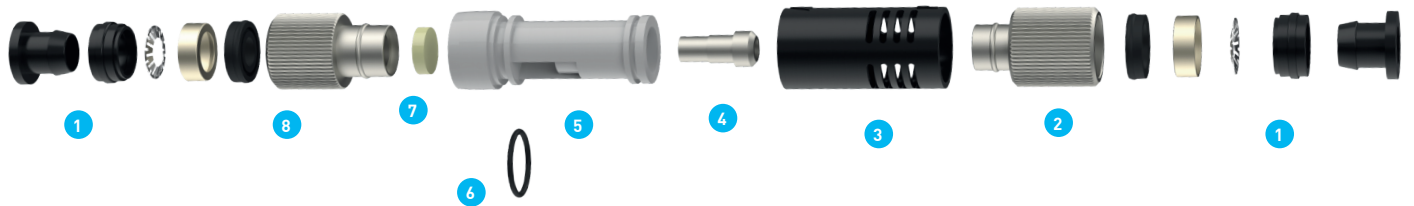


VM-C02 ■ Nylon



VM-C03 ■ Nylon

VUE ÉCLATÉE/DETAILANSICHT



1 Raccord rapide/Schnellanschluss

2 Fond avant en laiton nickelé/Werkstück aus vernickeltem Messing

3 Bague extérieure en nylon/Nylon Außenring

4 Buse en laiton nickelé/Vernickelte Messingdüse

5 Support buse en nylon/Düsenhalter aus Nylon

6 Joint torique en nitril SH70/Nitril O-Ring SH70

7 Filtre polyéthylène/Polyethylen-Filter

8 Fond arrière en laiton nickelé/Werkstück aus vernickeltem Messing (Hinten)