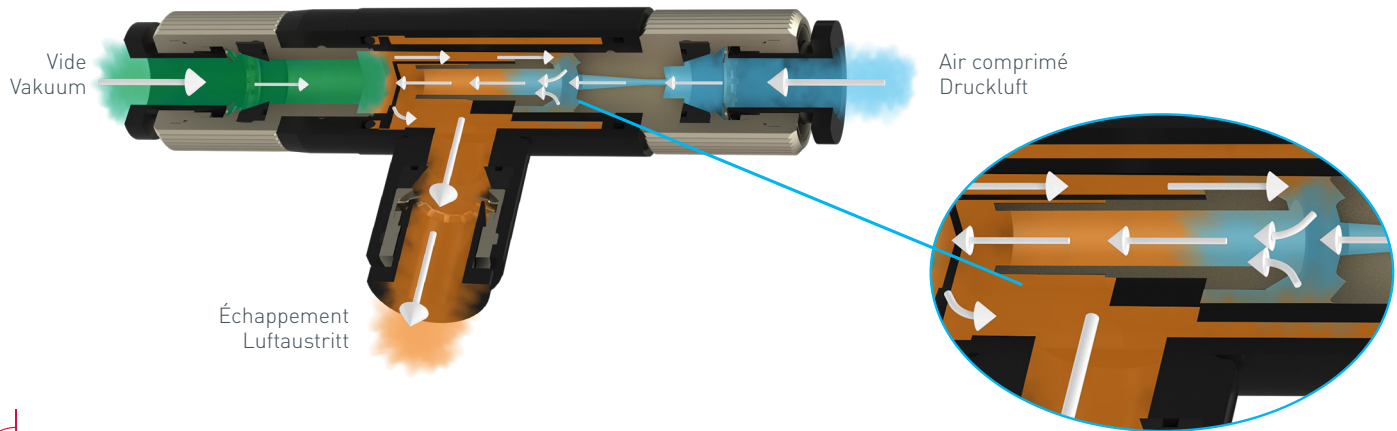
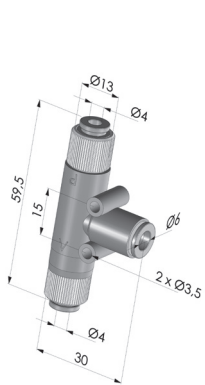


MODE D'EMPLOI  
GEBRAUCHSANWEISUNG

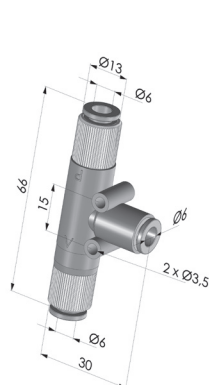
SCHÉMA DE PRINCIPE/SCHEMATISCHE DARSTELLUNG



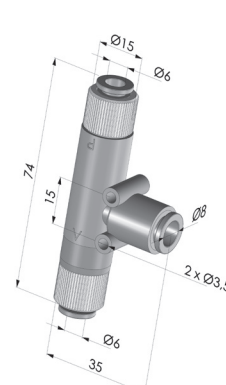
PLAN/PLÄNE



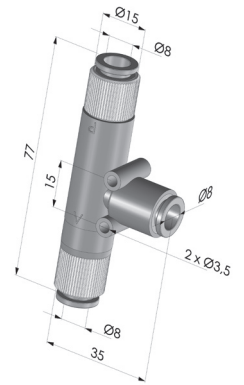
VMT 05 04



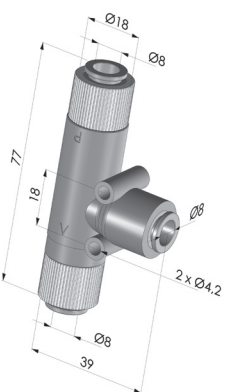
VMT 05 06



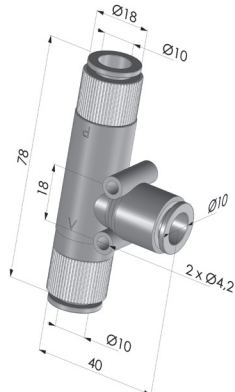
VMT 10 06



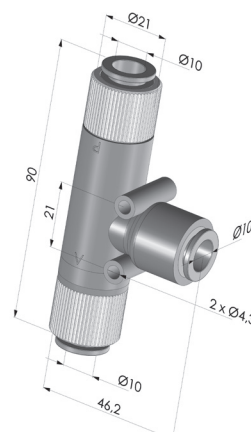
VMT 10 08



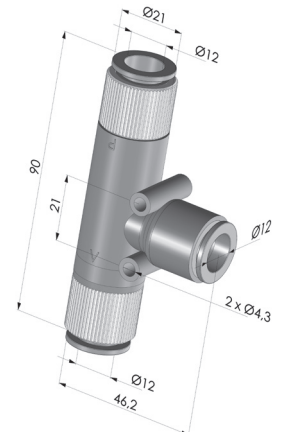
VMT 15 08



VMT 15 10



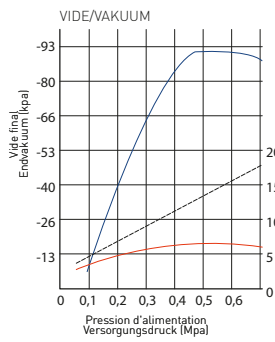
VMT 20 10



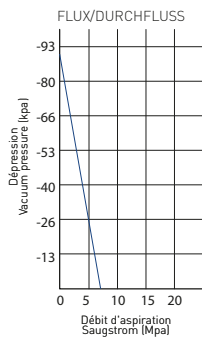
VMT 20 12

INFORMATIONS TECHNIQUES/TECHNISCHE INFORMATIONEN

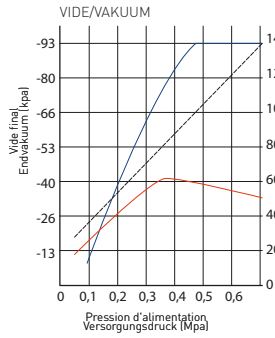
Référence/ Artikelnr.	Ø Tube/ Ø Schlauch (mm)	Ø Buse/ Düse (mm)	Air aspiré/Angesaugte Luft à/bei 5 bar			Vide/ Vakuüm (%)	Air consommé/ Luftverbrauch (NI/min)	Pression d'air/ Luftdruck (bar)	Masse/ Gewicht (g)
			(NI/mn)	(l/s)	(m³/h)				
VMT 05 04	4 / 6	0,5	11,5	0,20	0,69	91	14	5	27
VMT 05 06	6 / 6	0,5	11,5	0,20	0,69	91	14	5	27
VMT 10 06	6 / 8	1	45	0,75	2,70	91	45	5	43
VMT 10 08	8 / 8	1	45	0,75	2,70	91	45	5	38
VMT 15 08	8 / 8	1,5	67,5	1,13	4	91	100	5	65
VMT 15 10	10 / 10	1,5	67,5	1,13	4	91	100	5	50
VMT 20 10	10 / 10	2	90	1,5	5	91	180	5	107
VMT 20 12	12 / 12	2	90	1,5	5	91	180	5	83



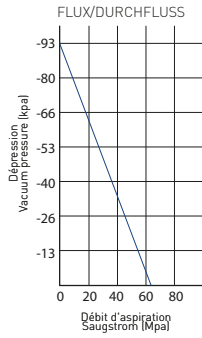
VMT 05 04/VMT 05 06



VMT 15 08/VMT 15 10



VMT 10 06/VMT 10 08

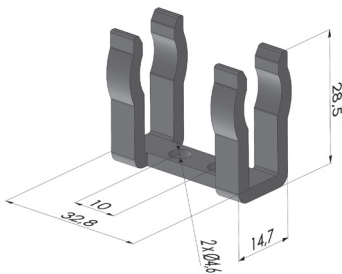


VMT 20 10/VMT 20 12

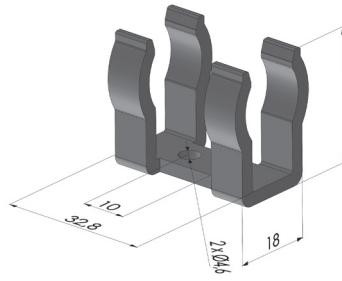
— Valeur de vide finale/Endwert des Vakuums  
 — Valeur de débit d'aspiration/Saugströmung Wert  
 - - - Consommation d'air/Luftverbrauch

OPTIONS/OPTIONEN

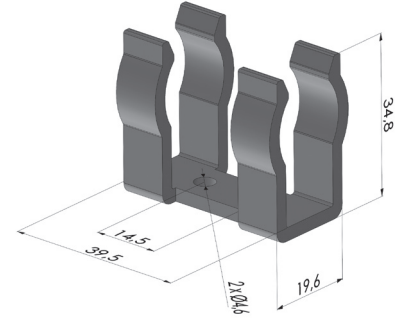
Référence/Artikelnr.	Masse/Gewicht (g)	Compatibilité/Kompatibilität
VM-C01	3	VMT 05 04 / VMT 05 06
VM-C02	4	VMT 10 06 / VMT 10 08
VM-C03	6	VMT 15 08 / VMT 15 10 / VMT 20 10 / VMT 20 12



VM-C01 ■ Nylon



VM-C02 ■ Nylon



VM-C03 ■ Nylon

VUE ÉCLATÉE/DETAILANSICHT

